

**Designed to weld:**

- Aluminium
- Steel
- Steel

**TIG AC : 10A ▷ 200A**  
**TIG DC : 5A ▷ 160A**  
**MMA : 10A ▷ 160A**



**Water cooling unit (option)**  
400W - ref. 041271

## INTERFACE

From the INVERTER technology, the TIG 200 AC/DC HF FV is controlled by a micro-processor with a digital panel.  
5 Memories : To save settings.

## TIG 200

### ✓ Starting Up:



Adjust  
Ideal  
Position

- 2 possibilities: HF without contact or LIFT with contact
- Integrated Automatism: «Adjust Ideal Position»

The system helps you to position the electrode before the current increase. A weak intensity is delivered, acting like a « light beam » (Available in 4T et 4Tlog).

### ✓ 3 trigger mode:

- 2 Times
- 4 Times
- 4 Times «LOG»: The operator can choose at any moment by shortly pressing the trigger 2 welding current.(Hot current and cold current).

### ✓ Automatic Torch Detection:

Possibility to connect a simple or double button torch, with or without built-in potentiometer.

### ✓ 3 AC/DC mode:

- **TIG:** Common settings AC and DC: pre-gas / current increase / intensity (1 or 2 intensity possible in 4Tlog mode)/ Post-gas / down slope.  
Specific settings for AC:
  - Balance (20 à 60 %) cleaning / penetration
  - Frequency to localize the arc with precision (20 à 200 Hz)
 -> Manual or automatic (AC Easy function)
- **TIG Pulsed:** - **Easy Pulse Mode:** The operator sets the average welding current. The device automatically adapts the frequency, the hot current and cold current.  
- **Normal Mode:** The operator sets the hot and cold current as well as the frequency.
- **TIG SPOT:** Allows to prepare parts by doing spot welding.

### ✓ Front plug for remote control:

To connect a foot pedal for TIG (ref.045682) or a manual remote control (ref.045675)



### Supplied with accessories – ref.011618 :

- TIG torch TIG SR26DB (4m)
- consumables box
- earth clamp (2m / ø25mm<sup>2</sup>)
- electrode holder (2m / ø25mm<sup>2</sup>)

### Also available without accessories

– ref.011625



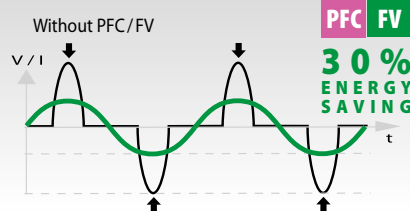
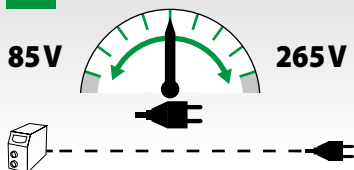
**MMA**

- Welds steel, stainless steel, cast iron, rutile or basic electrodes.
- The product features Anti-Sticking, Hot Start and Adjustable Arc Force.

## HIGH-TEC POWER SUPPLY

**PFC POWER FACTOR CORRECTION**

**FV FLEXIBLE VOLTAGE**



The TIG 200 AC/DC has a powerful integrated PFC and features FLEXIBLE VOLTAGE (85-265V).

The TIG 200 AC/DC will function on a standard 230V-13A / 110V-20A, even during intensive use with long extension leads (100m).

50/60hz	TIG AC	TIG DC	MMA	EN60974-1 (40°C)		U <sub>0</sub>	cm/kg	Protected & compatible POWER GENERATOR (+/- 15%)		
				I <sub>2</sub>	X%					
230V 1~	13A	10-200A	5-160A	10-160A	I <sub>A</sub> (60%) 95A	13%	70V	35/50	20x39x36 / 19	6 kW 7.5 kVA
110V 1~	20A	10-160A	5-160A	10-160A	90A	30%				