

WS-4L WIRE FEEDER

MIG / MAG WIRE FEEDER

Ref. 033207



The WS-4L separate water cooled wire feeder is compatible with the HEAVYMIG 500 WS welding machine.

SYNERGIC

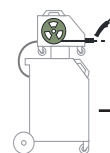
- **Synergic function** : The wire speed setting is controlled from the wire feeder.

INDUSTRIAL

- Can be fitted with water cooled torches for optimal productivity.
- Its heavy duty construction ensures a long service life.
- Its 4 wheel drive system combined with a 75W motor ensures effective wire feeding with any wire type.

MOBILE

- Supplied with its wire feeder support to attach on the welding generator. The wire feeder can be placed on the wire feeder support or be moved on the ground with the optional wire feeder trolley.
- Water cooled Inter connection cables from 1.6m to 30m.
- Lifting eyes.

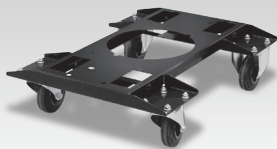


WS-4L wire feeder
Ref. 033207

See technical data sheet :
HEAVYMIG 500 WS
Ref. 032392

PACK TYPE : ref. 032545 (no regulator)								
	+		+		+		+	
HEAVYMIG 500 WS ref. 032392		WS-4L wire feeder ref. 033207		Inter connection cables 10m - 70 mm ² ref. 033658		Earth cable 4m - Ø 70 mm ² ref. 043831		Steel / Stainless steel 500A - 4m (WATER) ref. 041004

OPTIONS



Trolley for WS wire feeder
040977



Regulator 30L/min
 041622
 041219
 041646



Polarity reversal cable
033689

Inter connection cables

L.	Air cooled		Liquid cooled	
	1,6m	-	-	70 mm ²
5m	50 mm ²	034822	-	-
5m	70 mm ²	034839	70 mm ²	033641
10m	50 mm ²	034853	70 mm ²	033658
10m	70 mm ²	034860	95 mm ²	034877
15m	-	-	95 mm ²	034884
20m	-	-	95 mm ²	034891
30m	-	-	95 mm ²	034907

U ₁ I ₁		GAS NO GAS		200 300		Electronic Control	équipé d'origine / original equipment / originalausstattung / equipamiento de fabrica	EN60974-5 (40°C)	IP	cm/kg
24V	4A	0.6 - 1.6	0.9 - 2.4	✓	✓					