

# SEALING MACHINE BODY ZIPPER

GYS

Sealing machine

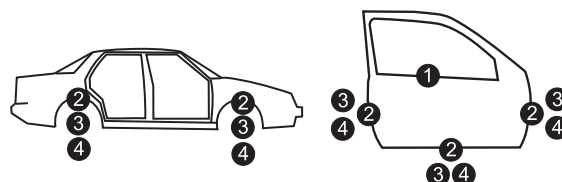
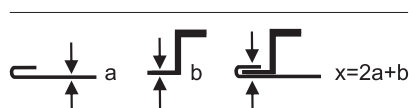
Ref. 056930

Hydropneumatic sealing machine **BODY ZIPPER** for shaping the edges of paneling sheets during body repairs. The bending machine is used to bend the edges of sheet metal used in the motor vehicle body repair process. Four sealing accessories are included in the set.

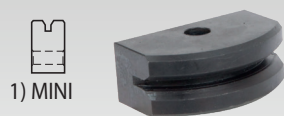
## APPLICATION

- The special design of the pneumatic drive ensures an extremely low level of vibration transmitted to the operator that is almost imperceptible in practice.
- The rubber coated handle, in addition to a secure grip, eliminates the already low level of vibration.
- The extremely quiet motor of this sealing machine contributes to a very appreciable working comfort.
- The device and its adapters are supplied in a plastic case, sturdy and with protective foam.
- The first accessory is used to pre-fold a sheet at a 45° angle. The other two are used for the finishing step, to close the edges of a sheet or to join two sheets together.

### Total thickness



## INCLUDED



## STORAGE CASE



Air pressure		
5 bar	2,1 kg	28 cm