



GROUP PRESENTATION

2024



SUMMARY

1

THE GROUP

A strong family business

Key facts and figures

Technology as a driving force for growth

2

DESIGN & PRODUCTION

R&D: a source of excellence and expertise

High standards and commitment, from conception to manufacture

100% integrated manufacturing

An international logistics centre for worldwide distribution

In-house, responsive after-sales support

3

PRODUCTS & SERVICES

Divisional distribution

Three catalogues

A sales team with a global reach

Training: sharing technical knowledge

Communication resources available

3

4

5

6

7

8

9

10

11

12

13

14

15

16

17

18



THE GROUP

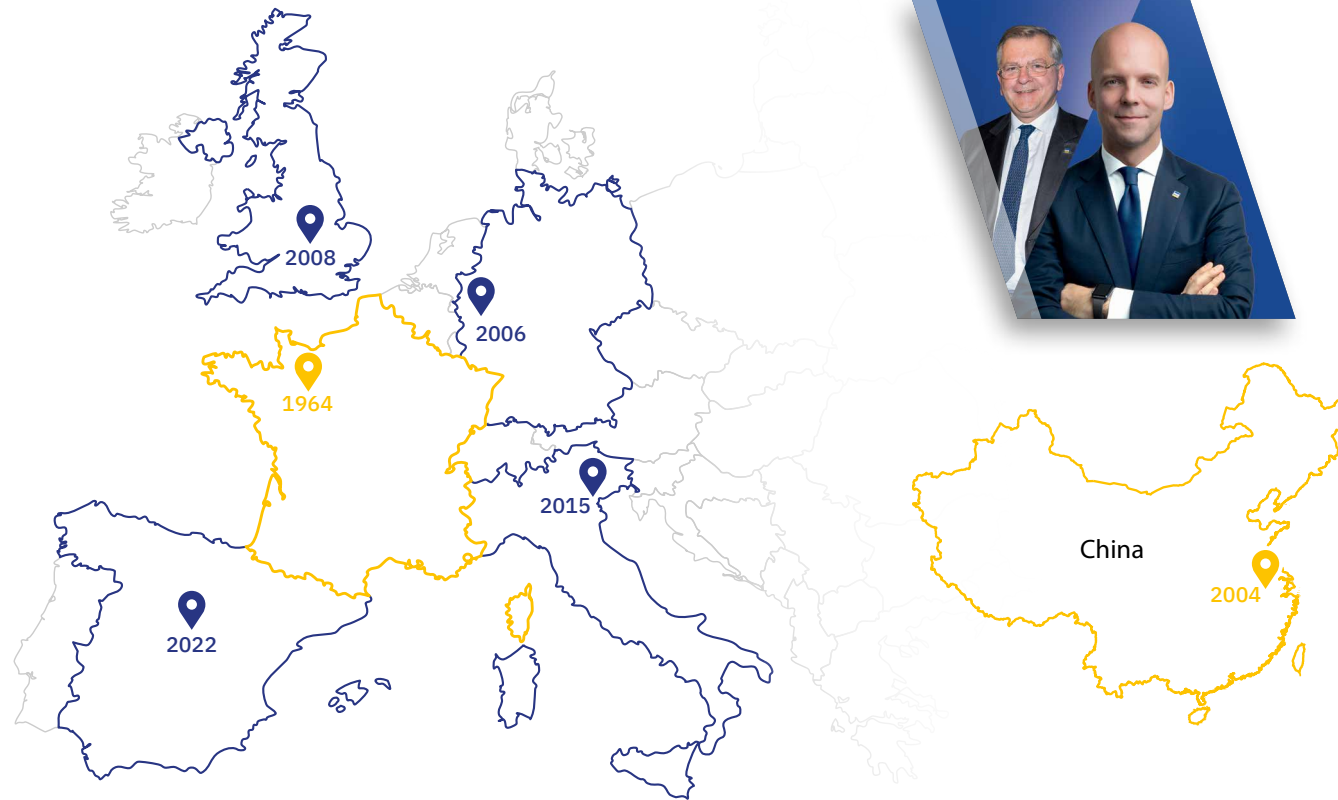




1. THE GROUP

A STRONG FAMILY BUSINESS

Nicolas and Bruno Bouygues



2

FACTORIES
for manufacturing



1

PLATFORM
for global logistics



6

SUBSIDIARIES
operating commercially



132

COUNTRIES
supplied





1. THE GROUP

KEY FIGURES

3 areas of operation

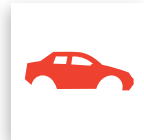
40%

WELDING & CUTTING



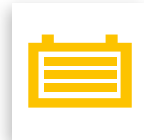
40%

EQUIPMENT FOR CAR-BODY REPAIR

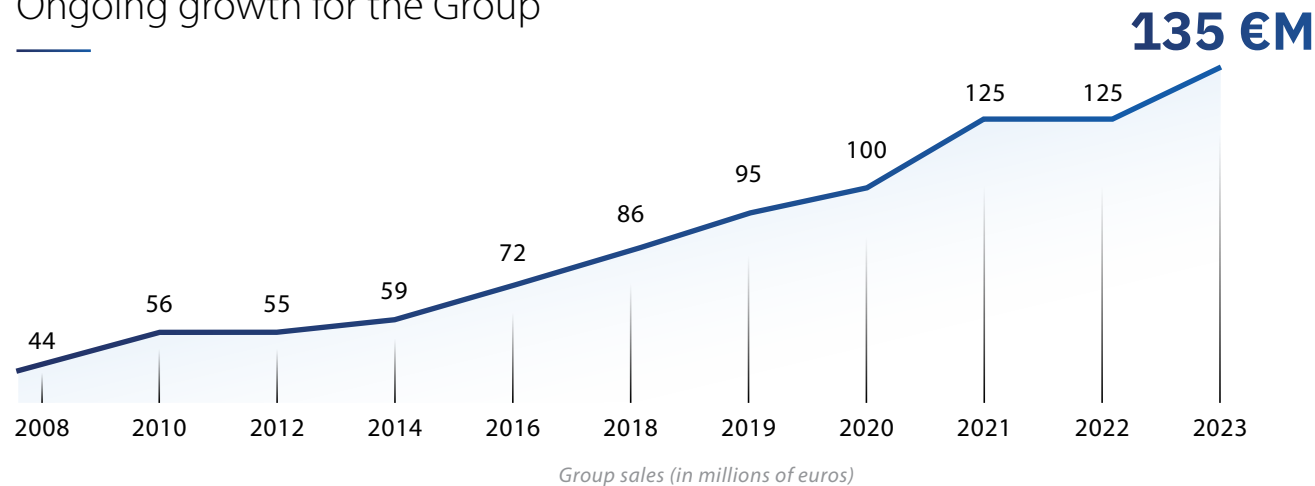


20%

BATTERY CHARGING



Ongoing growth for the Group



IN 2023...



135 €M
Consolidated turnover



900
Employees worldwide



53 000 m²
worldwide



C1⁺
Rating by the Banque de France



1. THE GROUP

INNOVATION AS A DRIVING FORCE FOR GROWTH



1980

2000

2010

2015

2025

Historic lines of business. Products incorporating transformers.

Increased use of electronics in our products.

Increasingly powerful on-board technology.

Development of connectivity and robotisation.

Supporting the technological evolution of our customers: E-mobility, Robotics, Product interconnectivity (IoT).



DESIGN & PRODUCTION



R&D: A SOURCE OF EXCELLENCE AND EXPERTISE

4 areas of expertise



ELECTRONICS

Development of advanced power/digital boards



MECHANICS

Clamp design, sheet metal work, plastics, mechanically welded structures, etc.



EMBEDDED COMPUTING

User interface (HMI) development, welding modes, control algorithms, communication (Bluetooth / Wifi)



ROBOTICS

Communication interfaces, robotic wire feeders, URcap software, installation files



+90

Specialist expertise

- + Electrical engineering doctorates
- + Embedded computing engineers
- + Fluid dynamics engineers
- + Plastics processing engineers
- + Mechanical design engineers
- + Radio frequency engineers



+50

Product innovations designed every year

HIGH STANDARDS AND COMMITMENT FROM DESIGN TO MANUFACTURE

22 people dedicated to the certification and improvement of products and processes



CONFORMITY

- + Compliance with standards
(20 European directives, 400 standards)
- + Component and durability testing
- + Simulation of climatic conditions

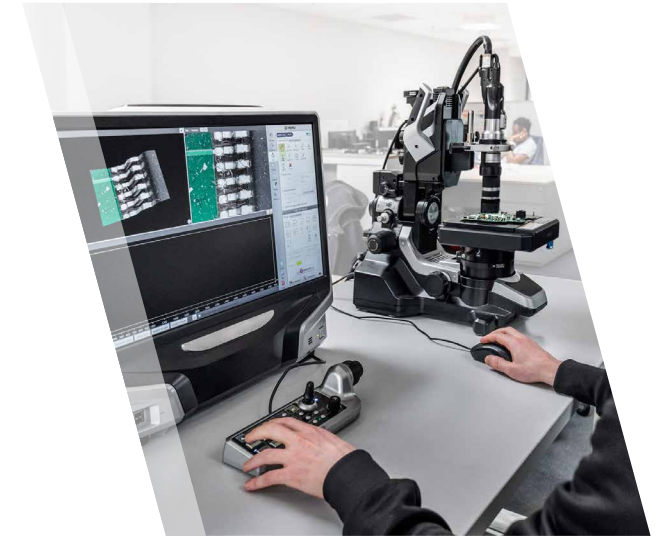
➔ Compliance with regulations



TESTING IN PRODUCTION

- + Manufacture of testing equipment
- + Compliance and functionality testing
- + Product traceability

➔ Quality control



QUALITY

- + Component and product control
- + Product and process improvement
- + Environmental analysis

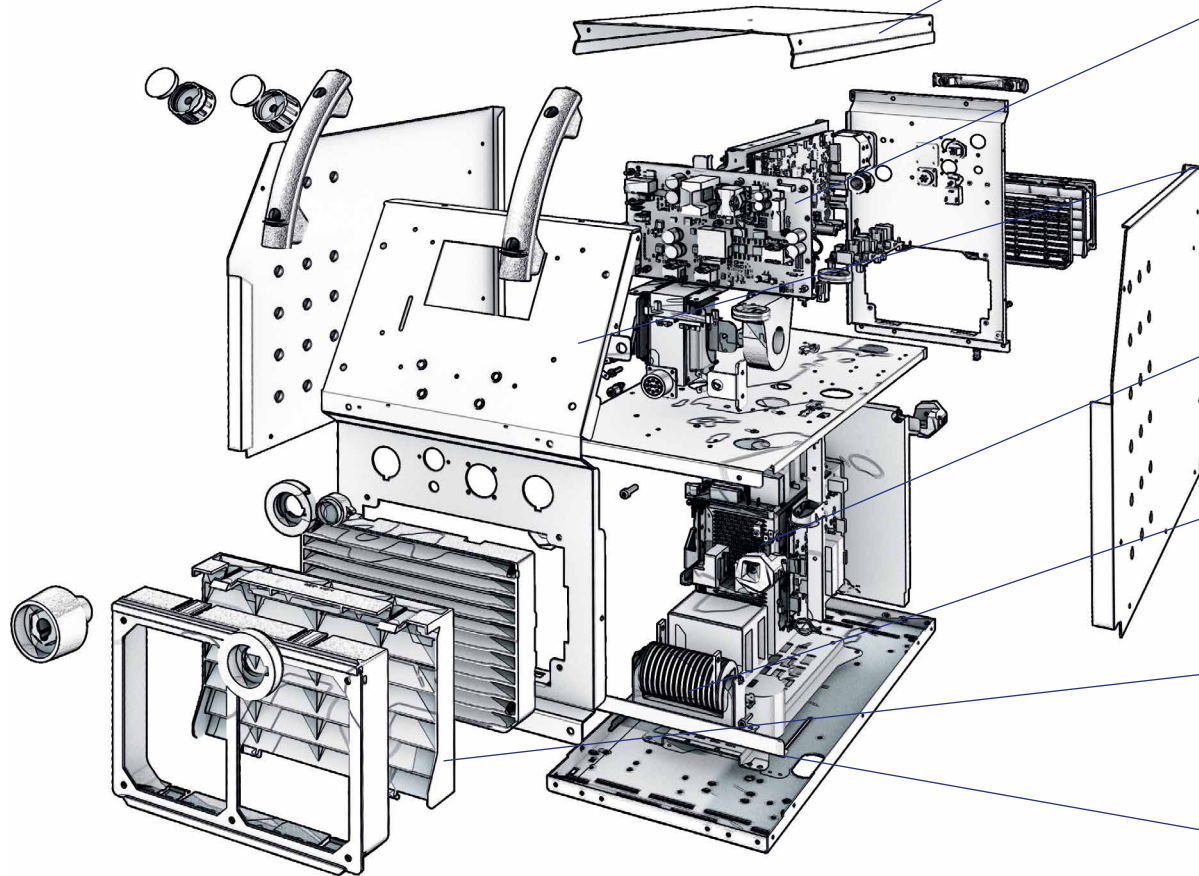
➔ Certifications
ISO 14001 / ISO 9001



2. DESIGN & PRODUCTION

100% INTEGRATED MANUFACTURING

The expertise to deliver flexibility, rapid response rates, and quality



SHEET METAL WORK

1,400 T of bent and cut sheet metal per year.



[Learn more](#)

ELECTRONICS

72 million components fitted every year.



[Learn more](#)

PAINTING

160,000 m² of painted surface area.



[Learn more](#)

WIRE

250 km of wire cut and crimped per year.



[Learn more](#)

TRANSFORMERS

150,000 transformers/coils manufactured per year.



[Learn more](#)

MECHANICAL COMPONENTS

720,000 pieces manufactured each year.



[Learn more](#)

ASSEMBLY

20 assembly lines.



[Learn more](#)



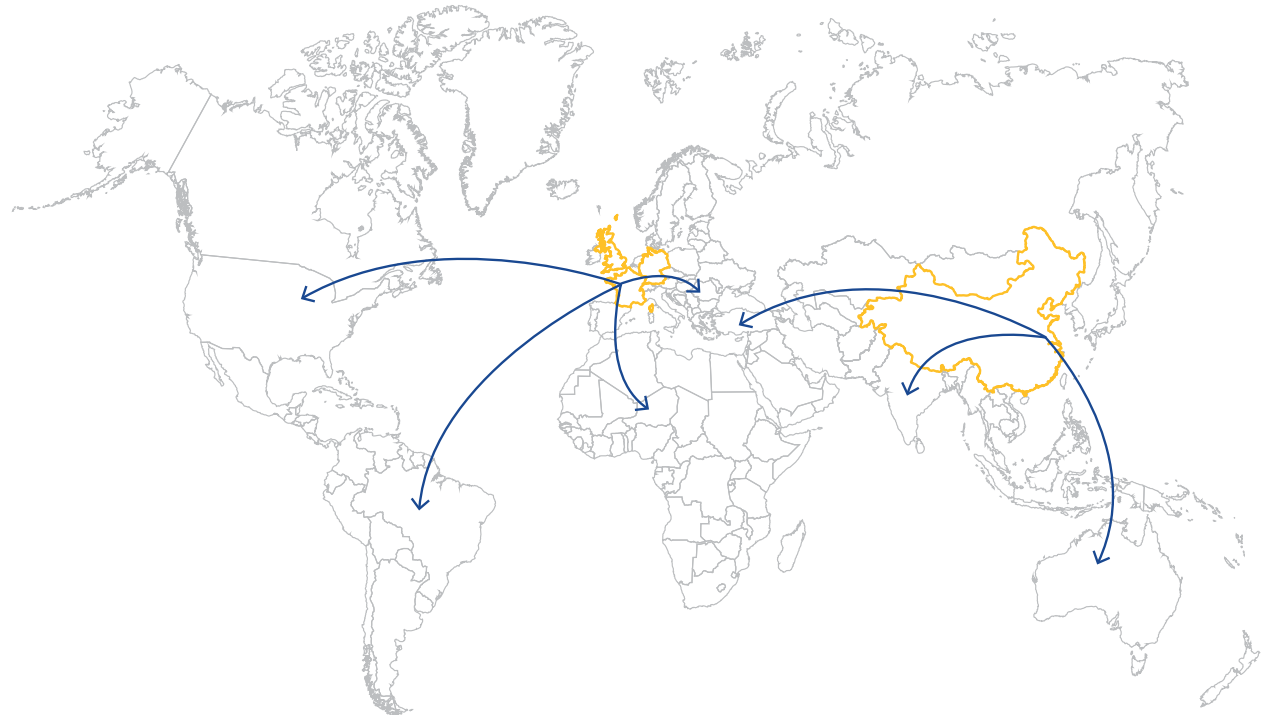
2. DESIGN & PRODUCTION

AN INTERNATIONAL LOGISTICS CENTRE FOR WORLDWIDE DISTRIBUTION

Large stock quantities available all year round

1 international logistics centre
in France (Laval - 53).

3 regional warehouses
at our subsidiaries in China, Germany
and the UK.



1 International logistics centre



3 300 part numbers
in stock all year round



1 MILLION
products shipped
worldwide each year

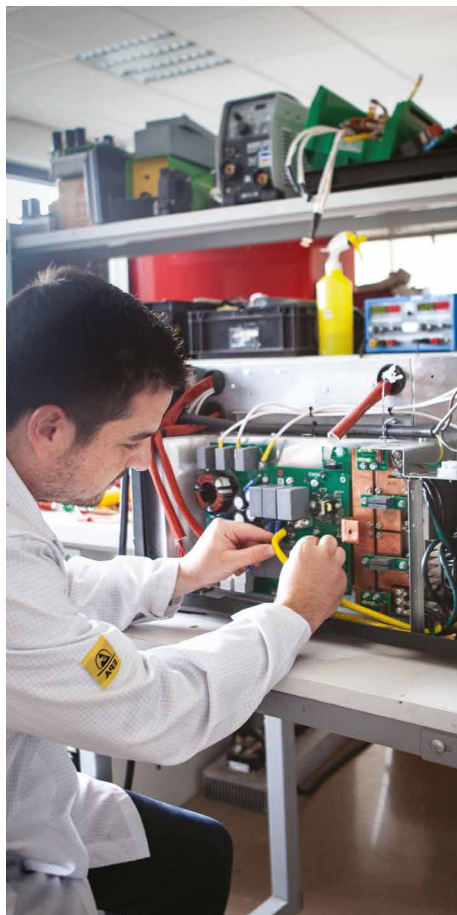


-48h
target delivery time
in Europe



2. DESIGN & PRODUCTION

IN-HOUSE, RESPONSIVE AFTER-SALES SUPPORT



Planet GYS: a dedicated platform created for our customers.

- + Contact details for your sales contacts
- + Preliminary diagnosis, after-sales declaration
- + Quotations in just a few clicks
- + Real-time monitoring of repair progress
- + Spare parts lists and prices
- + Technical documents
- + Product software updates



2 Areas of expertise

After-sales Inverter / After-sales Traditional



32 technical repair personnel



+ 1 000 spare parts manufactured in our own workshops



2 years warranty on a wide range of products



•
•
○

PRODUCTS & SERVICES





3. PRODUCTS AND SERVICES

DIVISIONAL DISTRIBUTION



A comprehensive range of products to suit a wide range of business sectors

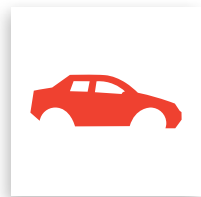
With a wide variety of products in our three main fields, and significant depth in our product ranges, GYS can cater to all user requirements across a diverse variety of industries.

3 WORLDS



WELDING & CUTTING

- + 350 product references
- + 1250 accessory / consumable reference



EQUIPMENT FOR CAR-BODY REPAIR

- + 250 product references
- + 850 accessory / consumable references



BATTERY CHARGING

- + 200 product references
- + 200 accessory / consumable references

Welding & cutting
Consumables
Accessories

Dent removal
Spot welding
Pulling
MIG/MAG welding
Lifting
Induction
Riveting

Chargers
Boosters and starters
Accessories



+ 800
Product references



+ 2,300
Accessory and consumable references



3. PRODUCTS AND SERVICES

OUR CATALOGUES



WELDING & CUTTING



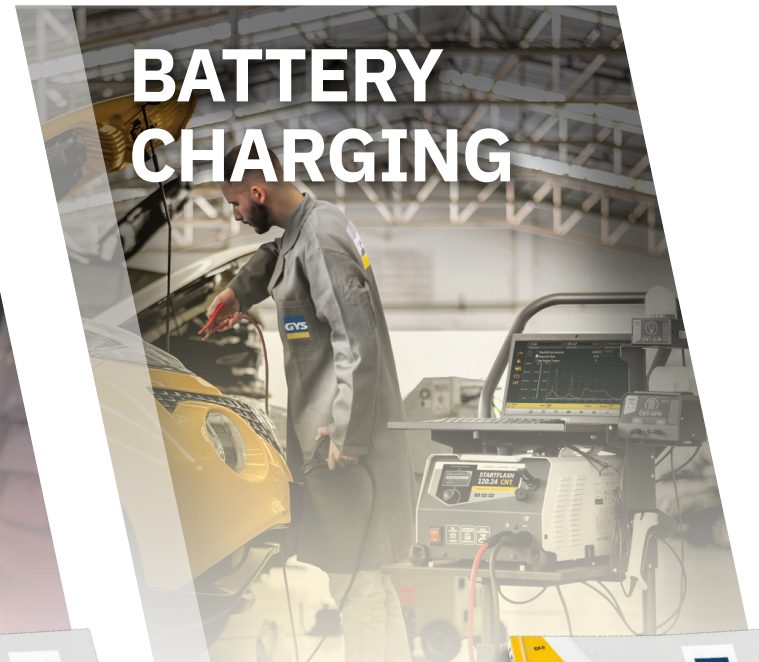
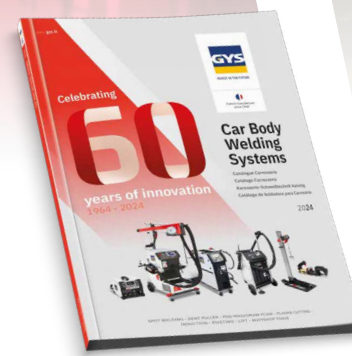
[View the catalogue](#)



EQUIPMENT FOR CAR-BODY REPAIR



[View the catalogue](#)



BATTERY CHARGING



[View the catalogue](#)



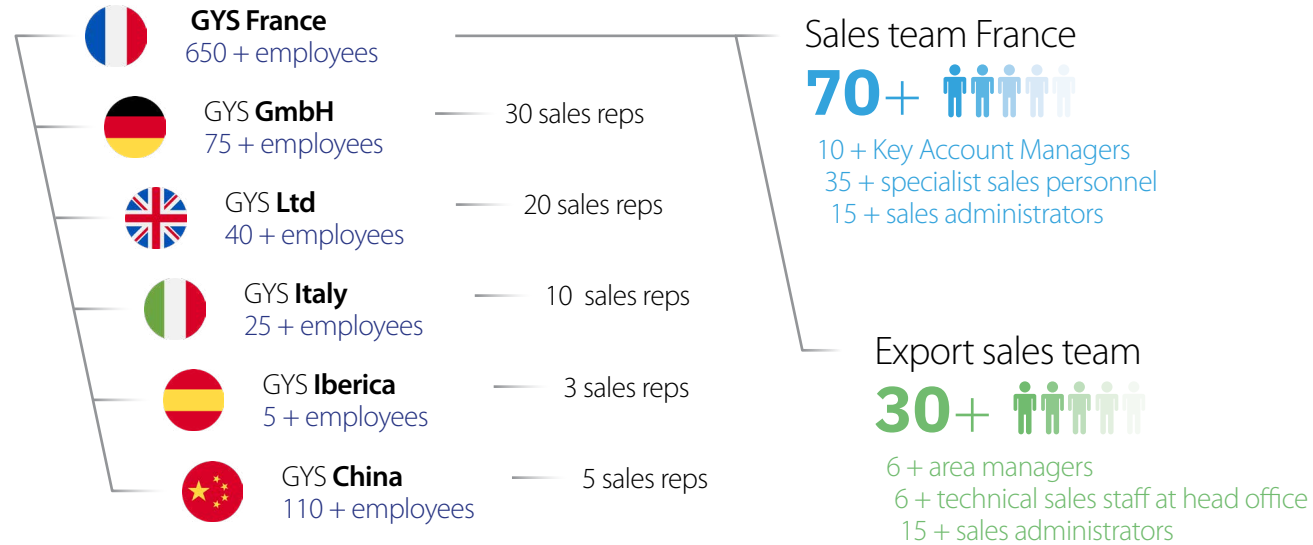


3. PRODUCTS AND SERVICES

A SALES TEAM WITH A GLOBAL REACH

A brand with an established presence in France and abroad

Our 170-strong multidisciplinary sales team reaches 132 countries, including France. They are fully committed to supporting our customers on a day-to-day basis. **The GYS group ensures exclusivity of sales of our products to our distributors, importers & local agents.**



132 countries supplied every year



15 languages spoken



+7 500 Shipments worldwide including 2,900 outside Europe



3. PRODUCTS AND SERVICES

GYS ACADEMY TRAINING

Sharing technical knowledge



SHOWROOM
WELDING

SHOWROOM
CAR-BODY REPAIR

SHOWROOM
CHARGE



400m2 +
of showrooms
dedicated to training



5 Trainers
specialised in our products



200 people trained
every year
distributors, partners, sales teams, employees...



+50 video
tutorials
available on Youtube
for at-home training

COMMUNICATION RESOURCES AVAILABLE



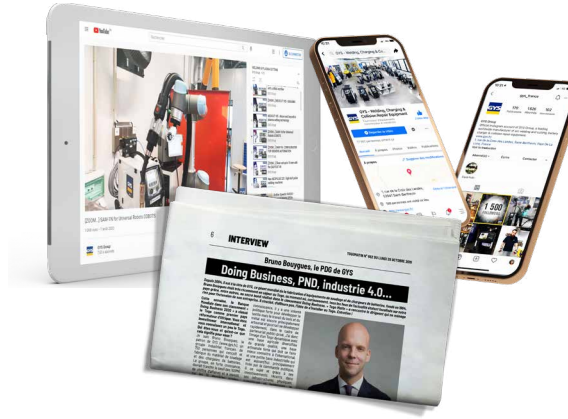
Sales support tools

Media

- + Product catalogues
- + Brochures
- + Flyers
- + Display stands
- + Packaging
- + Product customisation

Technical documentation

- + Detailed data sheets
- + User manuals
- + Declarations of conformity



Multimedia communication

GYS Youtube channel

- + Video tutorials
- + Focus on technologies/features
- + New product presentation

Social networks

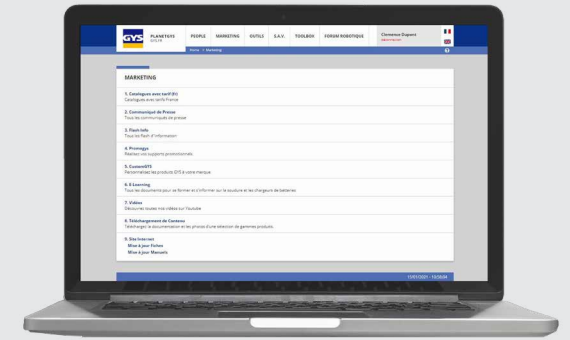
- + Keep up to date with GYS on

Press relations

- + GYS in the spotlight... (local and specialised press)

Image library

- + You can download all the images for GYS products from our website



Intuitive customer extranet

Information available

- + Order tracking
- + Sales contact details
- + Technical information
- + E-learning: welding and charging training

Marketing tool

- + Promogys: tool for producing promotional materials

After-sales service area

- + Follow-up and acceptance of current quotations
- + Spare parts lists and wiring diagrams
- + Download software updates
- + Repair procedures



www.gys.fr



GYS FRANCE

1, rue de la croix des Landes
CS 54159
53941 SAINT-BERTHEVIN Cedex
Laval – France
Tel: +33 2 43 01 23 60
E-mail: contact@gys.fr

LOGISTICS CENTRE
2, rue Jean Dausset
53910 Changé – France
Tel: +33 2 43 01 54 33



Watch a behind-the-scenes
video of the business



GYS GERMANY

Professor-Wieler
Straße 11
52070 Aachen
Deutschland
Tel: +49 241 / 189-23-710
aachen@gys.fr



GYS UK

Unit 3
Great Central Way
Rugby – Warwickshire
CV21 3XH – United Kingdom
Tel: +44 1926 338 609
uk@gys.fr



GYS ITALY

GYS Italia SRL
Via Porta Est, 7
30020 Marcon – VE Italia
Tel: +39 041 53 21 565
italia@gys.fr



GYS CHINA

Lot n°15
6666 bd Songze
201706 Qingpu Shangai
China
Tel: +86 6221 4461
contact@gys-china.com.cn



GYS IBÉRICA

Avenida Pirineos 31
Nave 9
San Sebastian de los Reyes
28703 Madrid - España
Tel: +34 917-409-790
iberica@gys.fr